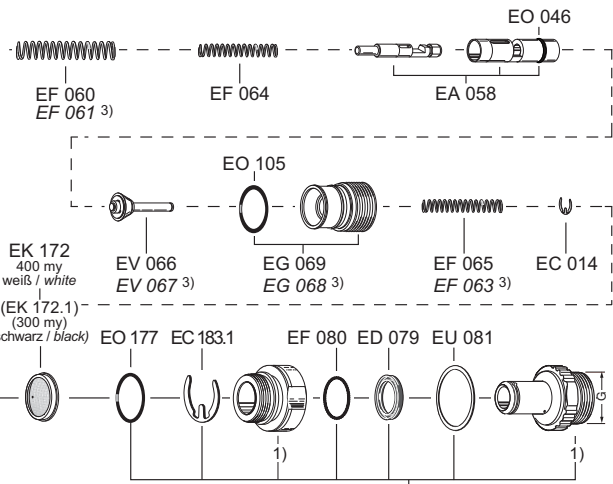
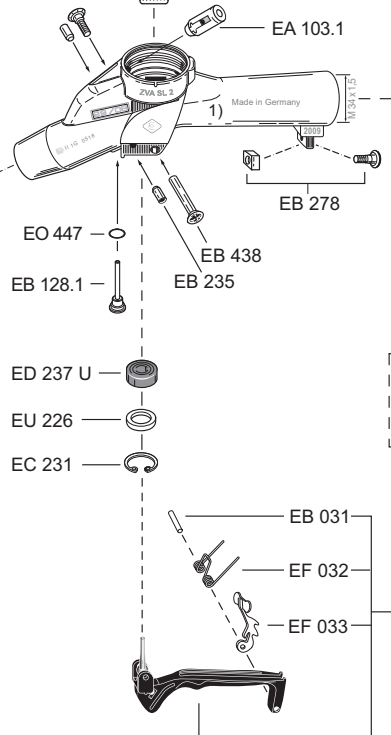
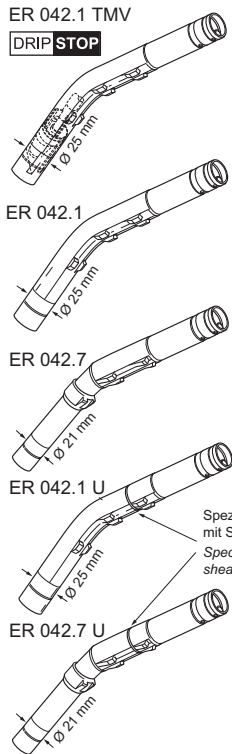
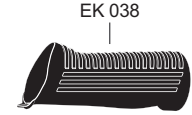
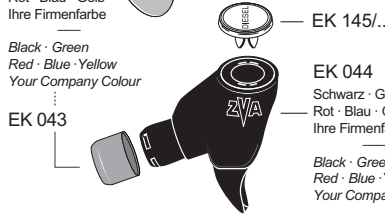
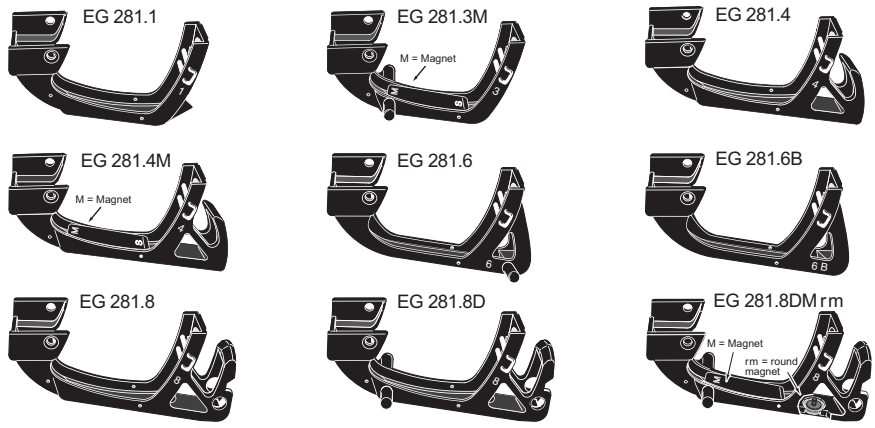


- 2) Für 'L1'-Ausführung (Low temperature, bis -40°C)
 - 3) Für Hochleistungs-Ausführung ZVA Slimline 2 H.
- 1) Not supplied as spare part.
 - 2) For 'LT'-Version (Low Temperature, up to -40°C)
 - 3) For high flow version ZVA Slimline 2 H.



| | |
|-------------------------------|----------|
| R 1" AG / 1" BSP male | EA 075 |
| R 1" IG / 1" BSP female | EA 075.1 |
| 3/4" NPT IG / 3/4" NPT female | EA 075.3 |
| R 3/4" IG / 3/4" BSP female | EA 075.4 |
| 1" NPT IG / 1" NPT female | EA 075.5 |
| R 3/4" AG / 3/4" BSP male | EA 075.7 |

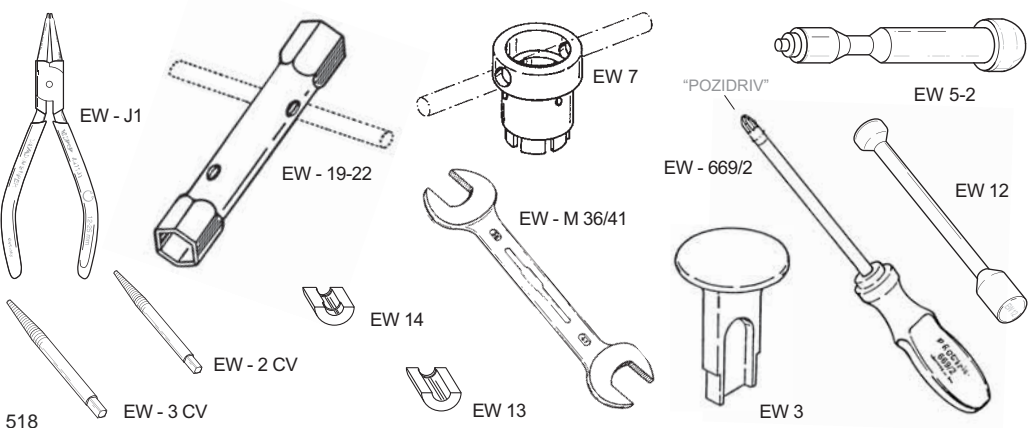


SSB 16
Safety Swivel Break
M 3/4 x 1.5

ESB 16
Elbow Safety Swivel Break
M 3/4 x 1.5

PSB 16
Pump Safety Break f. High Hose Dispensers
3/4" NPT or 1" NPT
~ 65 mm

BS 16
Break Sleeve Polyurethane f. SSB 16 + ESB 16 + PSB
Schwarz (Standard)
Blau, Grün, Gelb, Rot
Black (Standard)
Blue, Green, Yellow, Red
~ 90 mm



Montagewerkzeuge
Assembly Tools

| | |
|--------------|---------------------|
| EW - J1 | f. EC 231 |
| EW 19-22 | f. EG 069, EK 148.1 |
| EW 2 CV | f. EB 235 |
| EW 3 | f. EA 058 |
| EW 3 CV | f. EA 103.1 |
| EW - M 36/41 | f. EA 075 |
| EW 5-2 | f. EA 058, EA 103.1 |
| EW 7 | f. EK 148.1, EA 050 |
| EW 669/2 | f. EB 438, EB 278 |
| EW 12 | f. EO 105 |
| EW 13 | f. EV 067 |
| EW 14 | f. EV 066 |